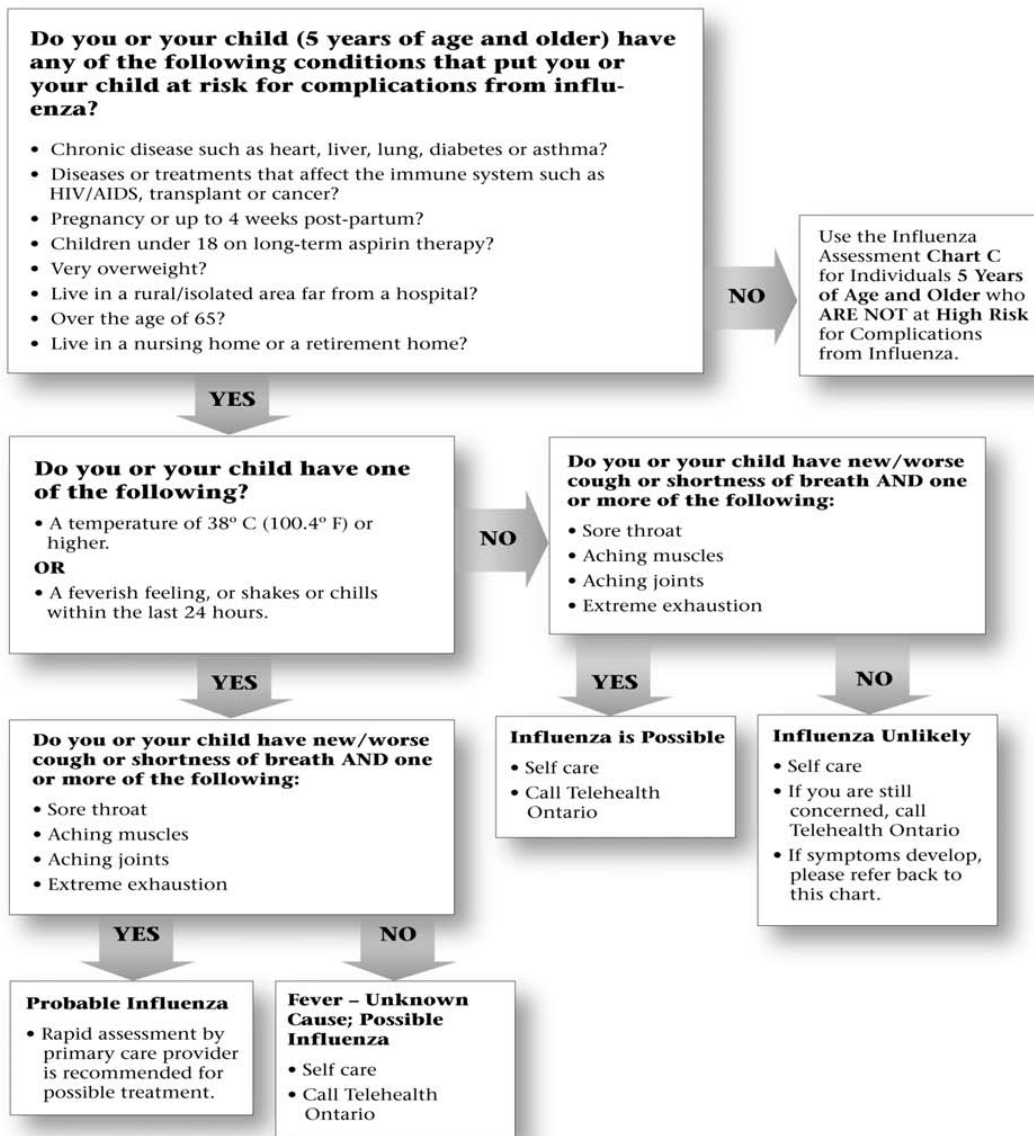


Chart B
 Influenza Self-Assessment Chart for Individuals **5 Years of Age and Older** who **ARE** at **High Risk** for Complications from Influenza



TELEHEALTH ONTARIO 1-866-797-0000 or TTY 1-866-797-0007

If you or your child has new onset or worsening of the following symptoms, you should take your child to the closest emergency department or call 911 immediately:

- Difficulty breathing / shortness of breath when doing very little or resting
- Continuous vomiting or severe diarrhea with signs of dehydration such as dry tongue, dry mouth, decreased peeing (no urine for the past 6-8 hours), or very yellow/orange urine
- Stiff neck, sensitive to light
- Seizures
- Confusion or disorientation

The Ministry of Health and Long-Term Care Guidance for the Management of Influenza-Like Illness in Ambulatory Care Settings during Pandemic (H1N1) 2009 – Summary.

http://www.health.gov.on.ca/en/ccom/flu/h1n1/pro/docs/ambulatory_guidance.pdf